



STUDENT and EMPLOYEE HOUSING INFORMATION SESSION

Welcome – Chancellor Judy C. Miner

Overview – Vice Chancellor Susan Cheu

Off-campus – Judy Miner

On-campus – Presidents Thuy Nguyen, Lloyd Holmes

Questions & comments – All

Housing Allocation from Measure G Bond Funding

- \$200 million has been identified in the Measure G Bond to address employee and student housing issues
- On-site housing would have an estimated 4 - 5 year construction timeline before there would be any on-site housing availability
- Infrastructure to support housing is not a bond-eligible expense - alternate funding would need to be identified
- In order to provide more immediate solutions, senior management has been looking at partnerships with existing developments

Estimated Timeline to Build Housing

Action	Timeline
Conduct CEQA Study	6 - 18 months
Develop plans and obtain approvals	6 -18 months
Develop Project with Construction Partner*	24 months
Identify Third-Party Management and Operations Partner	6 – 12 months
Move-in Occupancy	Up to 60 months

***Dependent upon project size**

Considerations to Maintain Housing

- Building management operation and ongoing maintenance
- Food Service/Self-Serve Options
- Security and related Title IX concerns
- Scheduled maintenance
 - Ongoing building maintenance needs (e.g., roofing, painting, carpet)
- Market Rental Rates vs. Potential Subsidized Rental Rates

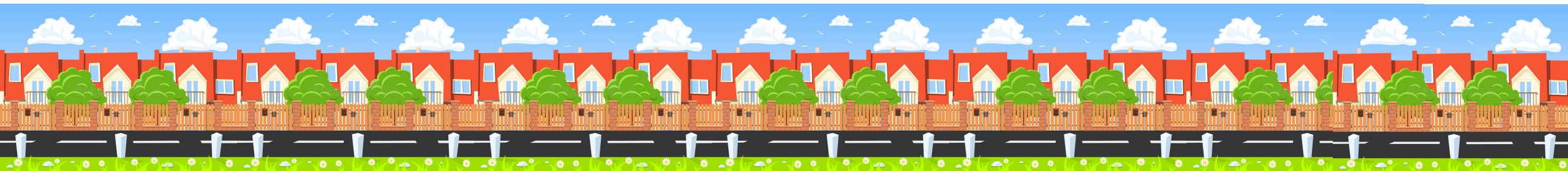
LOS ALTOS

Los Altos appeals court decision ruling the city must allow a downtown housing project to proceed

City of Los Altos sued by pro-housing group

Housing fight rages on in Los Altos, as city appeals YIMBY legal victory

Housing advocates file suit against Los Altos for blocking project



CUPERTINO

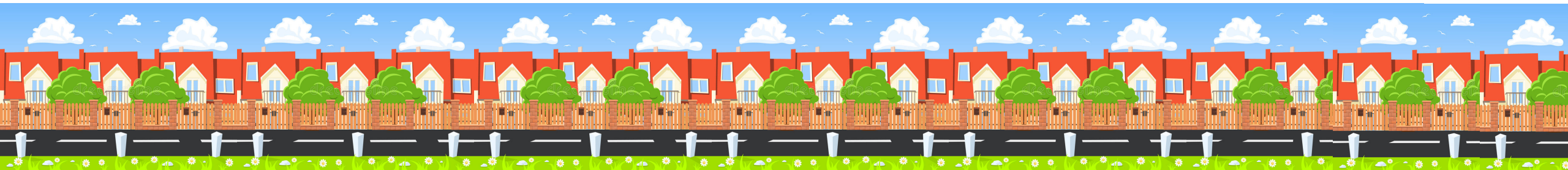
Judge sides with developer in contentious Cupertino redevelopment battle

Community reacts to developer's plan for old Vallco mall

Cupertino should eschew pro-growth candidates

'We Almost Have Riots': Tensions Flare in Silicon Valley Over Growth

CUPERTINO, Calif. — Silicon Valley is bent on disrupting the world. Its products affect how millions upon millions of people live and work. But when it comes to the physical space that many technologists call home, there are increasing demands to leave things alone.



Remote workers are on the move

More tech companies plan to let workers stay remote post-pandemic

Working from home post-COVID-19? Facebook, Apple, Twitter and Microsoft embracing remote work

Microsoft is letting more employees work from home permanently

Recent housing trends

The Shift to Remote Work Will Forever Change Silicon Valley

Twitter Says Its Employees Will Work from Home Permanently

When Workers Can Live Anywhere, Many Ask: Why Do I Live Here?

Is Silicon Valley losing its shine? Tech companies are leaving California

School Workforce Housing

231 Grant Avenue, Palo Alto



110 units – studios, 1 and 2 bedrooms for school employees & families

Investment partners: Santa Clara County, school districts, Facebook

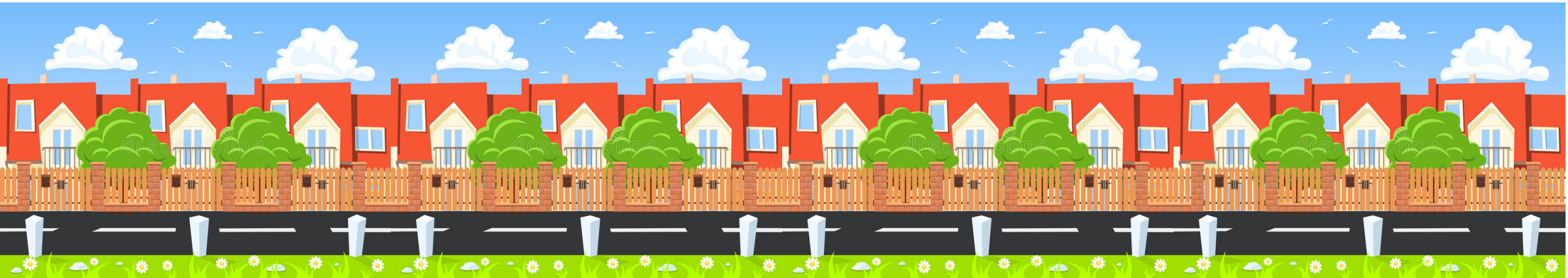
Not funded by Measure G

Other possibilities

- Exploring a potential project with non-profit Alta Housing for employee and student housing in Mountain View
- Entering a Joint Powers Authority with the Fremont Union High School District, Cupertino Union School District and Sunnyvale Union School District for affordable employee housing

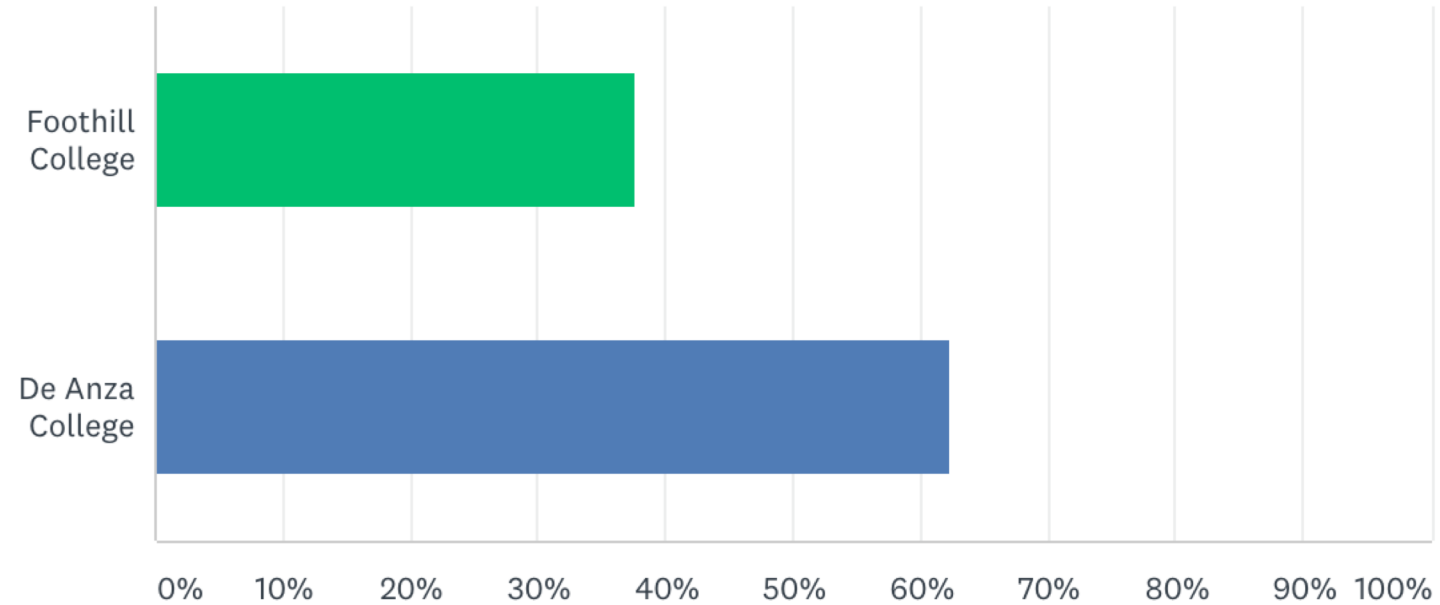
Community-based housing survey of Foothill-De Anza students

Conducted Jan. 19 – Feb. 6, 2021



Which college do you attend?

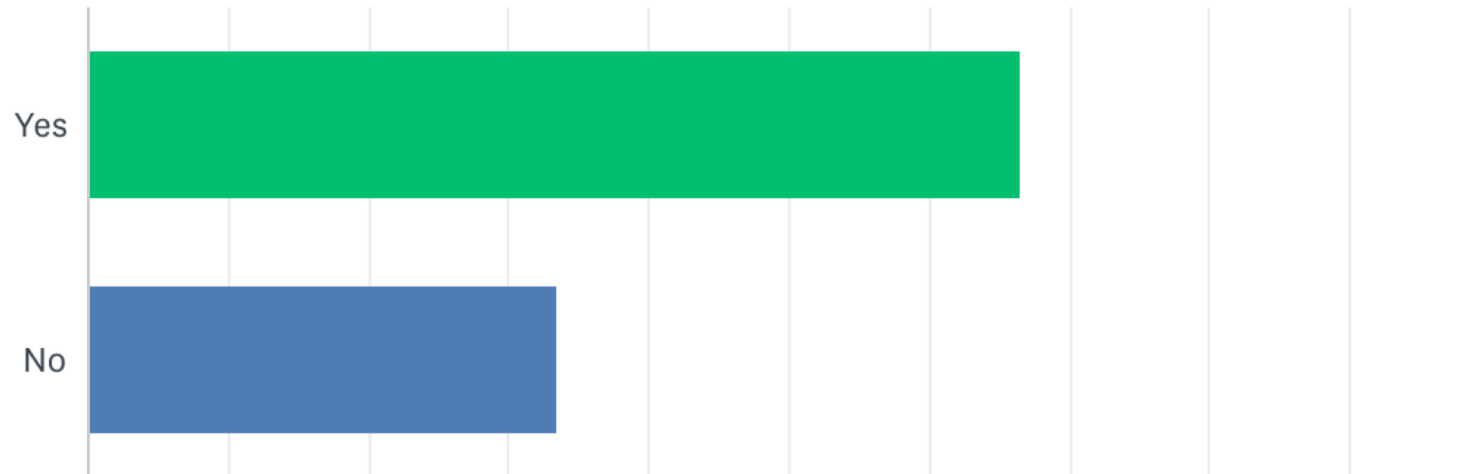
Answered: 2,737 Skipped: 0



ANSWER CHOICES	RESPONSES	
Foothill College	37.71%	1,032
De Anza College	62.29%	1,705
TOTAL		2,737

Would you possibly be interested in living in community-based affordable housing?

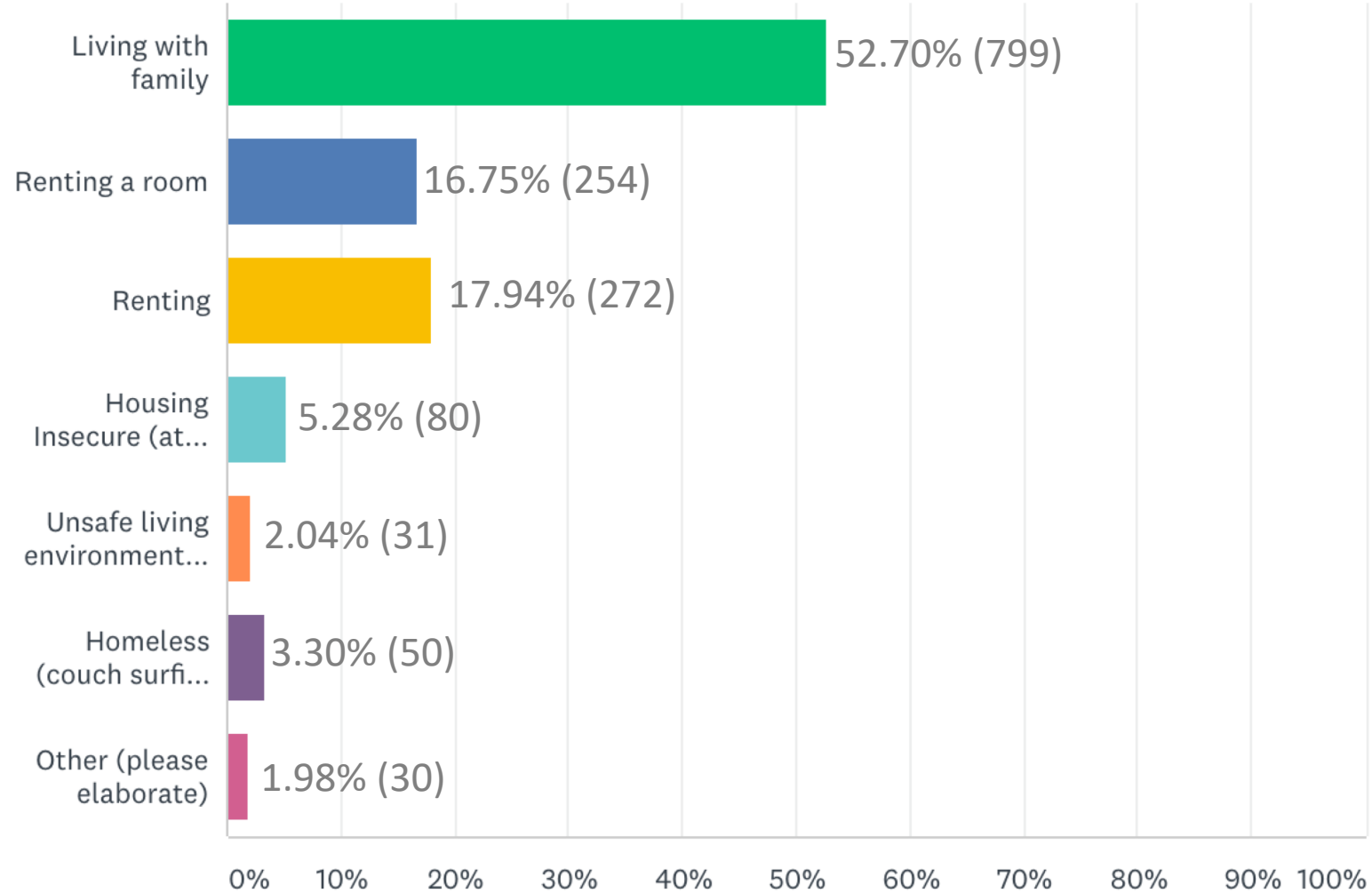
Answered: 2,737 Skipped: 0



ANSWER CHOICES	RESPONSES	
Yes	66.46%	1,819
No	33.54%	918

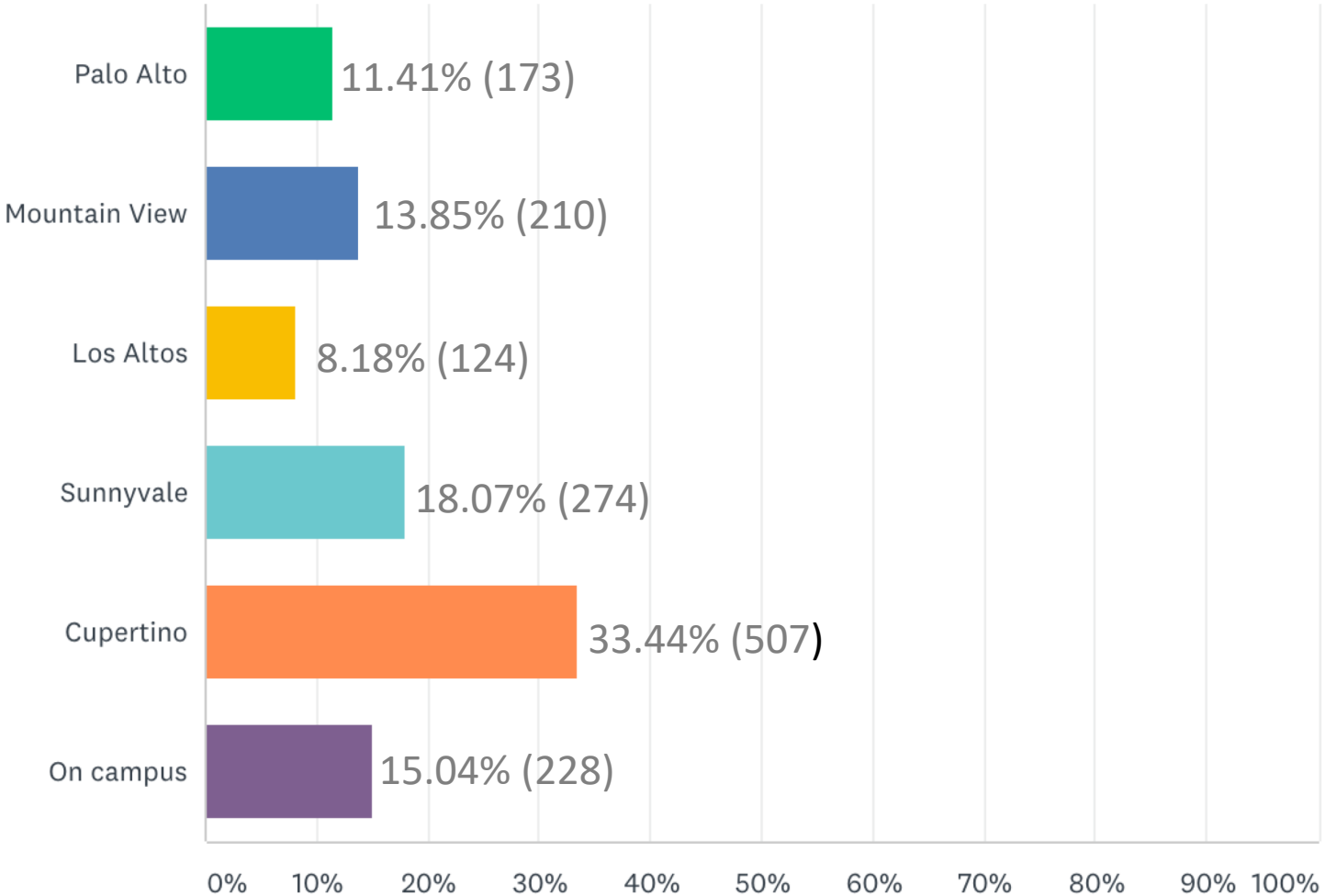
What best describes your current living situation?

Answered: 1,516 Skipped: 1,221



Which of the following areas in the district would you most desire to live in?

Answered: 1,516 Skipped: 1,221



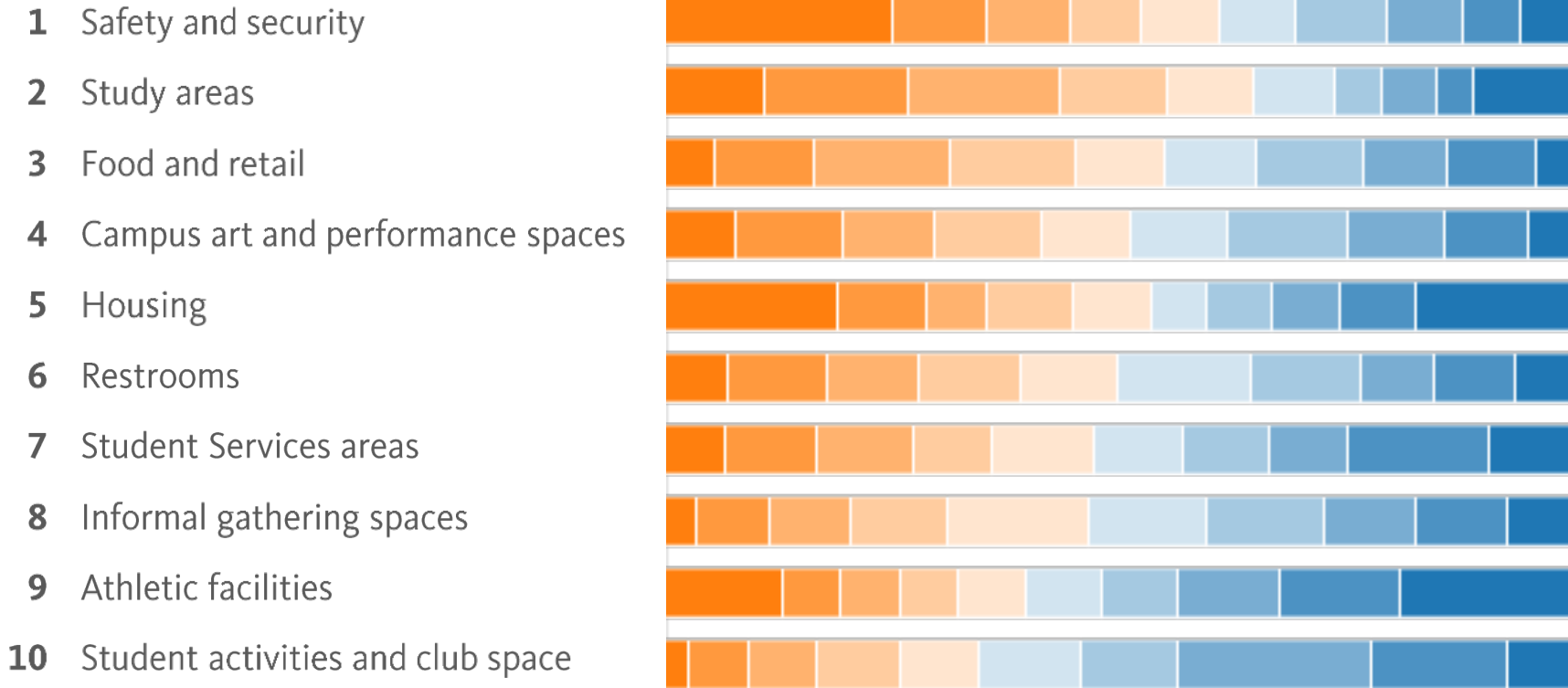


DE ANZA COLLEGE SURVEY

De Anza College is developing a Facilities Master Plan for the next five years – in your opinion, what should De Anza College focus on?

Rank Options

First choice [Orange gradient] [Blue gradient] Last choice



QUESTIONS & COMMENTS

